

anpanman museum

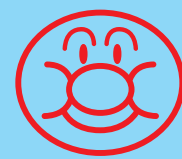
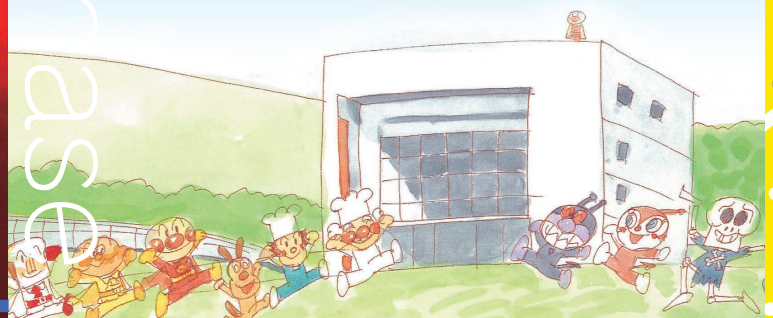
アンパンマン
ミュージアム
Anpanman Museum

詩とメルヘン
絵本館
Poem and Märchen Gallery

English

Home of Takashi Yanase's

poem & märchen gallery



アンパンマン
ミュージアム
Anpanman Museum

Kahoku-cho in Kami City, Kochi Prefecture is the land of Takashi Yanase, creator of Anpanman. Located in this tiniest of towns, the Anpanman Museum is a spiritual home for those who love Anpanman. There is no difficult art here, and there are no suggested paths. Wander around however you like and see if you can find Anpanman and his friends hiding here and there throughout the museum.



詩とメルヘン
絵本館
Poem and Märchen Gallery

The Poem and Märchen Gallery houses a complete collection of all cover art and illustrations ever made by Takashi Yanase for the magazine *Poem and Märchen*. Small but full of dreams, joys, love, tears, and kindness, the gallery is another "Yanase world" that is somewhat different from the Anpanman Museum. Say so when you like something, cry when you are sad, and laugh when you are happy. In this place of the heart, be real with your feelings.

yanase takashi
memorial hall

©T.YANASE // FROEBEL-KAN • TMS • NTV

Explore the museum!



1F Entrance

Featuring a three-storey atrium that recalls an outdoor stage, the entrance is modeled after the Piazza del Campo in the medieval Italian city of Siena. The museum's shop offers a wide variety of Anpanman merchandise, including a number of original items only available here!

2 The-Hide-and-Seek Tree

This large automaton is fashioned after Takashi Yanase's "The-Hide-And-Seek Tree," and plays the Anpanman theme song, "Anpanman's March". Every hour on the hour, familiar Anpanman characters peek their faces out.



3 AtoZ

If you can read the floor panels all the way from A to Z, you too can be an Anpanman master!

The only Anpanman handprint in the world is here, too.

4 Giant Anpanman Mural

See Anpanman and his friends all on one big wall. The Anpanman at the bottom is about as tall as a 3-year-old. Try standing next to him!

5 Anpanman Theater

This theater shows episodes of the *Anpanman* animation series. The show features Anpanman's many friends and keeps you on the edge of your seat wondering what will happen next! Come take a break and watch if you get tired walking around the museum.



Spring at the Bread Factory



The four Under a Tree

4F Yanase Takashi Gallery

This gallery showcases a wide variety of images from the world of Anpanman as drawn by Takashi Yanase. Also on display are tableaus created specially for this gallery as well as priceless original drawings that can only be seen here.

Anpanman on the roof
Anpanman will show himself during his patrol!! (look for him when outside)



Giant Slime Machine

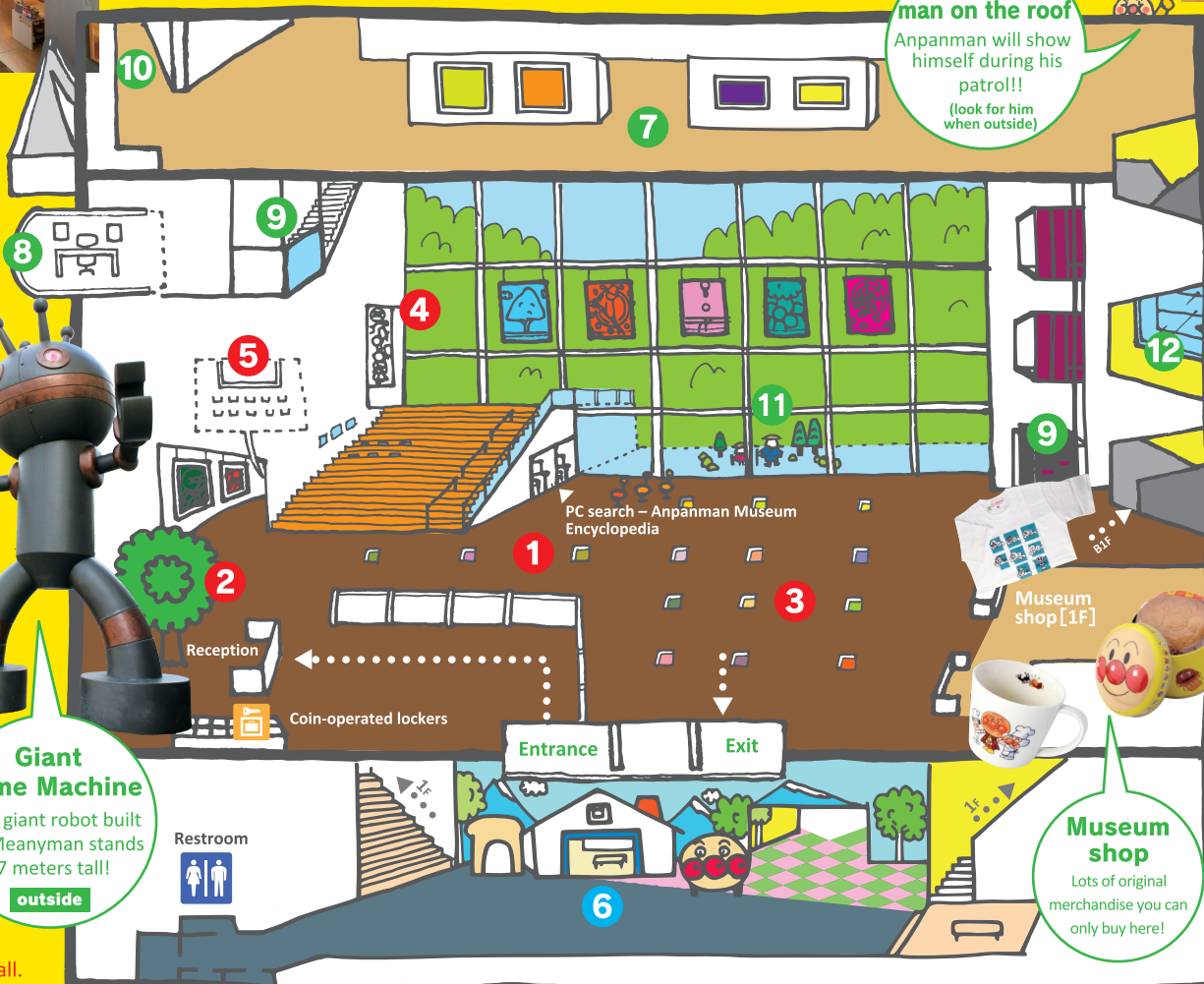
This giant robot built by Meanyman stands 7 meters tall!

outside

B1F Anpanman World

A georama forms the centerpiece in this miniature re-creation of the town in which the characters of the *Anpanman* world live. At the bread

factory, listen to Anpanman's voice on the phone and see the oven where Anpanman characters' faces are baked. At Meany Castle, sit in the cockpit of Meanyman's Mole-Mobile or bring Meanyman up on the screen with a foot sensor. These are just some of the many fun ways to play with Anpanman and his jolly friends.



8 Honorary Director's Room

This is the honorary director's cozy room, a favorite place of Takashi Yanase's. Check out the titles on the books on the bookshelf painted in the picture. They might at first look like famous works, but there are actually some small differences.

9 Elevator and Stairs to 4F

Spark inspired the staircase color, which radiates a mysterious orange when sunlight hits it. The elevator with its unique exposed pink and purple pulley is modeled after Meanyman's color scheme. When the elevator starts moving, take a look through the peep hole!

10 Slope Exhibit Room

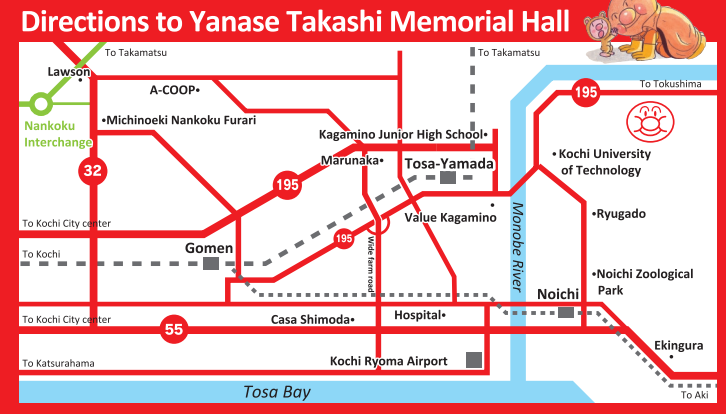
The walls of this small room let you do lots of fun things, such as hearing your voice resonate when you speak. The door at the end leads outside.

11 Outdoor georama

This 3D georama is modeled after "Riceball-Head in Vegetable Village". Some characters inside do not appear in Takashi Yanase's original drawings. Compare these to the original drawings in the 4F gallery and see if you can spot the differences.

12 Glass repository

On display here are the toys, plushes, stationery, clothing, and many other Anpanman character merchandise that have been made over the years. Do you have any of these at home?



[Driving] 60 mins from Kochi City center/40 mins from Kochi Ryoma Airport 35 mins from Kochi Expressway Nankoku Interchange [Train/Bus] Take the JR Dosan Line to Tosa-Yamada station. Transfer to a JR bus bound for Otochi. Get off at Anpanman Museum Mae (about 25 mins).

Museum Hours

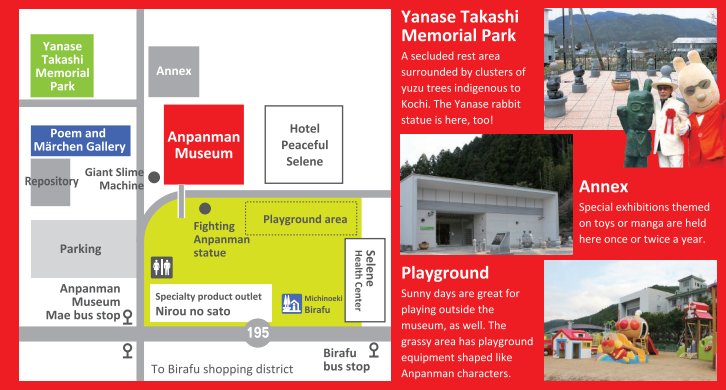
9:30am – 5:00pm (admission until 4:30pm) Closed Tuesdays
 ※ Opens at 9:00am from July 20 – August 31
 ※ When a holiday falls on a Tuesday, the museum is closed the following day. This does not apply to the following periods: 3/25 - 4/6, 4/29 - 5/5, 7/20 - 8/31, and 12/24 - 1/7

Admission

	All Yanase Takashi Memorial Hall locations		Poem and Märchen Gallery only	
	Individuals	A group of 20 or more	Individuals	A group of 20 or more
Adults	800	720	450	400
High/Junior High school	500	450	200	180
Children (3 and over)	300	270	100	90

*A person with a certificate of physical/mental/intellectual disability and an attendant pay half of the ordinary admission fee.
 *Admission prices are subject to change for special exhibitions.

Yanase Takashi Memorial Hall Area Map



yanase takashi
memorial hall

Yanase Takashi Memorial Anpanman Museum
 Promotion Foundation
 1224-2, Birafu, Kahoku-cho, Kami-shi, Kochi 781-4212, Japan
 [TEL] 0887-59-2300 [FAX] 0887-57-1410
<http://anpanman-museum.net/>



After moving to Tokyo to draw manga, Takashi Yanase married Nobu Komatsu, a coworker during his time at Kochi Newspaper.

Becoming a cartoonist 1953~

Takashi Yanase moved to Tokyo and worked in the publicity department of the Mitsukoshi department store before becoming a freelance cartoonist. While engaged in other pursuits, including winning the Shukan Asahi manga award for his "Mr. Bo" work and creating the manga-style commercial "The King of Beer" for the Sapporo Beer company, he struggled to make it big. He wore a number of hats in the meantime, taking jobs that included stage production, editing magazines, and appearing on TV. Although regarded as a man of many talents, he long suffered as a figure of obscurity in the world of cartoonists. His *Tenohira wo Taiyou ni* (Hold up your Palm to the Sun) was a piece he created to encourage himself at the time.



1969~

In 1969, Takashi Yanase published a short story for adults that was the progenitor of Anpanman. In 1973, he published *Anpanman*, a children's picture book that was also used at the Froebel-Kan. Although Anpanman was unpopular with publishers at the time, Takashi Yanase's passion for his creation never waned. After continuing to draw for numerous different media, Anpanman finally took off during the 1980s at preschools and kindergartens. The animated Anpanman TV show began airing in 1988.

Anpanman is born in a picture book



Anpanman from *Anpanman*, re-energized with a fresh face baked by Jamu-Ojisan.

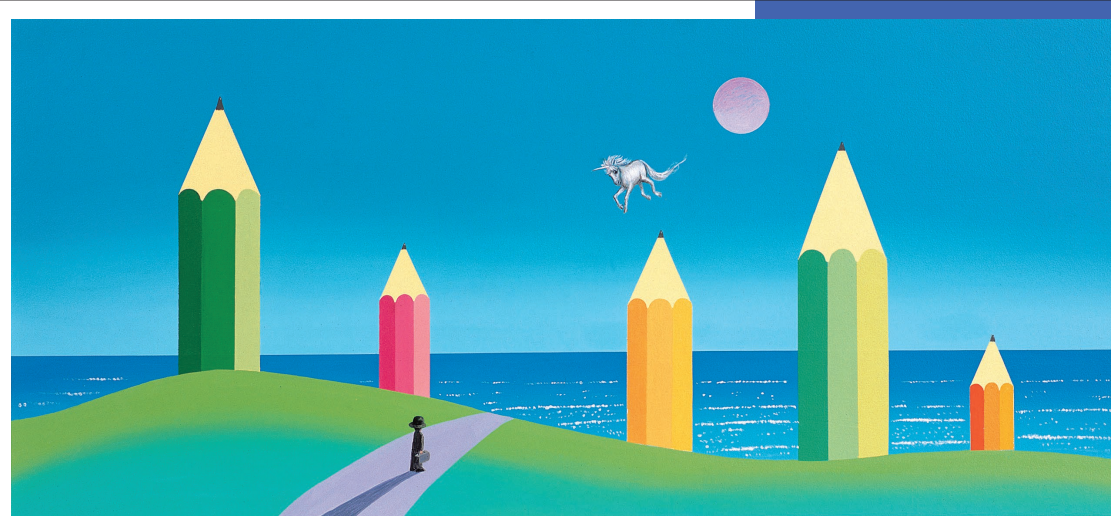


Repository
This repository houses some 2,000 works, including paintings by Takashi Yanase and works by artists involved with *Poem and Märchen*. The Anpanman face painted on the wall is a staggering 9 meters tall!

A *Poem and Märchen* serial publication **Kaiketsu Anpanman**

In 1975, *Rensai Nekketsu Märchen Kaiketsu Anpanman* became a serial feature for adult readers in the monthly periodical *Poem and Märchen*. The protagonist was not Anpanman but a struggling cartoonist named Yaruse Nakasu, a play on words created after an actress once told him that he made others cry inconsolably. *Rensai Nekketsu Märchen Kaiketsu Anpanman* was published in book form by Sanrio in 1977.

Fighting Anpanman statue
This 3-meter tall statue was built to commemorate the museum's 15th anniversary.



Pencil Peninsula

Association of Picture Book Cartoonists



1972

The Association of Picture Book Cartoonists was conceived by Takashi Yanase and Kazuo Maekawa. This open association has no complex rules or strict screening process for membership, requiring only that a cartoonist love picture books. Takashi Yanase had published very few picture books by this time. To say that his achievements as part of the association created "famed picture book author Takashi Yanase" is no exaggeration.

At the request of Osamu Tezuka, another Association of Picture Book Cartoonists member, Takashi Yanase worked as art director on the animation film *A Thousand and One Nights*. As thanks for making the film a hit, Mushi Production (Tezuka Osamu's production company) produced Takashi Yanase's first animation, *The Gentle Lion*.

1973

Poem and Märchen magazine was another of Takashi Yanase's lifetime achievements. For 30 years, beginning with the first issue, he created all cover art and handled all editing. Carrying on the spiritual world of *Akai Tori* (Red Bird) magazine, created by Miekichi Suzuki, Takashi Yanase devoted himself to constructing a new and lyrical world. Considered an international anomaly for its format, which consisted mainly of works submitted by readers of the magazine, it launched the careers of many of Japan's greatest professional illustrators and poets.



Poem and Märchen magazine

Poem and Märchen Gallery

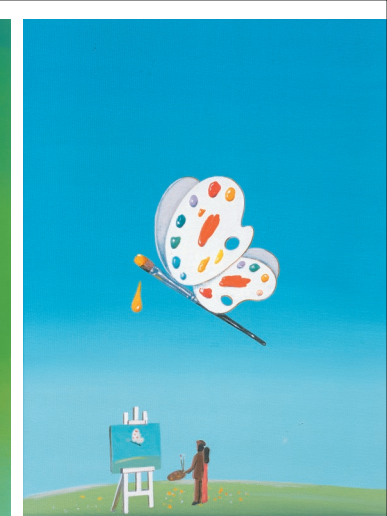
This gallery provides a window into the world of Takashi Yanase through his many contributions, which include cover art and illustrations created for *Poem and Märchen* magazine, as well as many of his poems and cartoons. The gallery also holds special exhibits two or three times a year. In addition to original drawings by *Poem and Märchen* artists, these exhibits showcase the works of picture book artists from Japan and around the world.



Picking up star fruits under a star tree beneath a cerulean sky



In beautiful May the wind rustles the newly green leaves



The butterflies of summer, such colors as if freshly painted

TAKASHI YANASE PROFILE

- 1919 — Born on February 6
- Completes a course in industrial design at the Tokyo Polytechnic High School (currently Chiba University). Works at Tokyo Tanabe Pharma Corporation, Kochi Newspaper, and Mitsukoshi department store's publicity department before becoming a freelance cartoonist
- 1961 — Creates the lyrics for *Tenohira wo Taiyou ni* (music by Taku Izumi)
- 1966 — Yamanashi Silk Center (currently Sanrio) publishes *Ai suru Uta*, a collection of poems by Takashi Yanase
- 1967 — Wins the Shukan Asahi manga award for his "Mr. Bo" frame cartoon
- 1973 — Sanrio publishes *Poem and Märchen* magazine consisting of poems, art, and cartoons. Becomes a monthly publication the following year (running from 1973 to 2003). *Anpanman* appears in *Kinder Story Picture Book*, a monthly picture book issued by Froebel-Kan
- 1988 — The Nippon Television Network Corporation begins broadcasting the *Anpanman* TV animation
- 1990 — *Anpanman* wins the 19th grand prize of the Japan Cartoonists Association
- 1991 — Receives the Order of the Sacred Treasure, Gold Rays with Rosette
- 1994 — Becomes an honored citizen of Kahoku-cho, Kami-gun (currently Kami City), Kochi Prefecture
- 1995 — *Anpanman* wins the Ministry of Education Award for the Japan Cartoonists Association
- 1996 — The Anpanman Museum of the Yanase Takashi Memorial Hall opens
- 1998 — The Poem and Märchen Gallery of the Yanase Takashi Memorial Hall opens
- 2009 — *Anpanman* is entered into the Guinness Book of World Records for having the most characters (1,768) in a single animated series
- 2011 — Becomes an honored citizen of Kochi Prefecture
- 2013 — Dies on October 13 at age 94
- 2014 — Yanase Takashi Honoki Park, resting place of Takashi and his wife Nobu, is completed

